

### Package content

- EUB1200AC
- Quick Start Guide
- CD with User Manual and Drivers

### Minimum Requirements

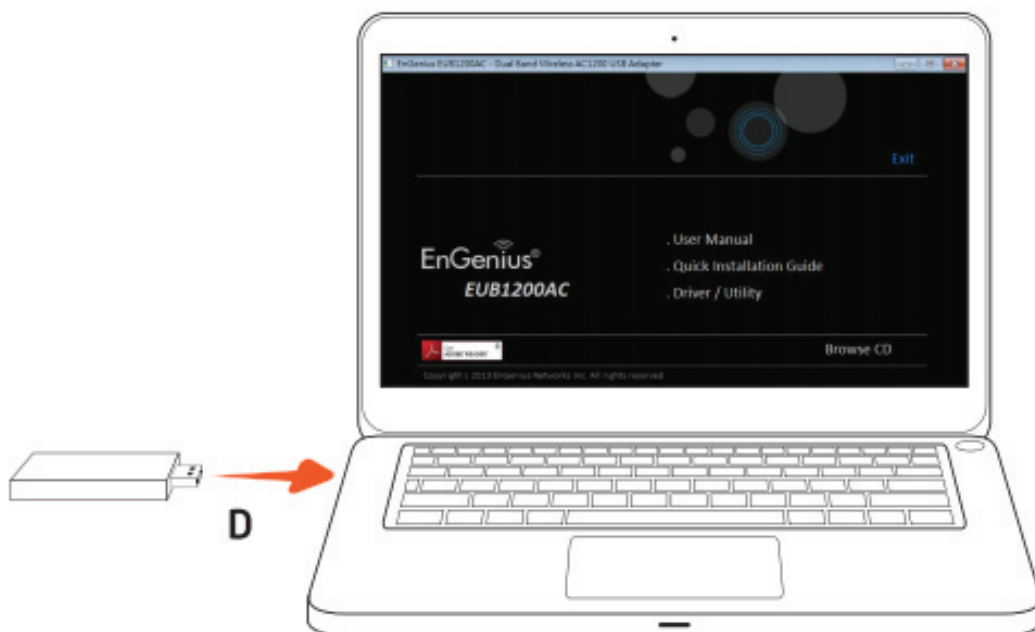
- Broadband Internet Service (Internet or DSL modem)
- Windows XP SP2 or Vista, Windows 7, MacOS 10.4 or later
- CD-rom drive
- Internet Browser (Internet Explorer, Safari, Firefox, Chrome)
- Device equipped with USB Port
- 20 MB hard disk space WPA2 Security Encryption

Note: For optimal performance, connect to a USB 3.0 port on your computer and connect to an 802.11AC wireless router.

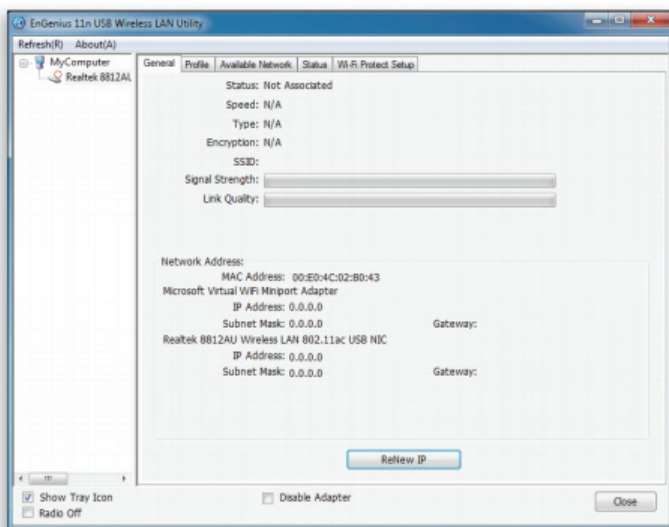
### 1. Installing the EUB1200AC

**Note:** If your router has a WPS button, you may skip ahead to 'Section 2' WPS Setup.

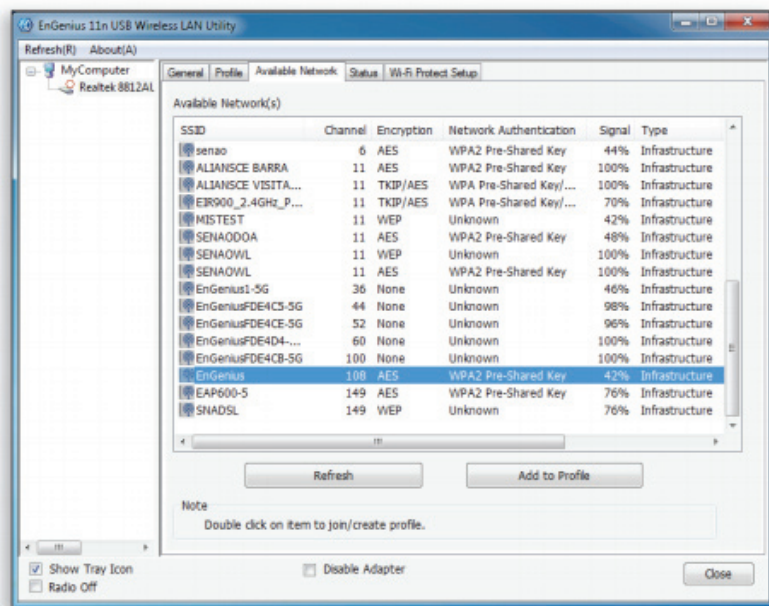
- Insert the included installation CD into the computer you would like to install the EUB1200AC onto.
- Click on "Driver/Utility" and install the driver.
- Click "Finish"
- Insert the EUB1200AC USB Adapter into an available USB port.



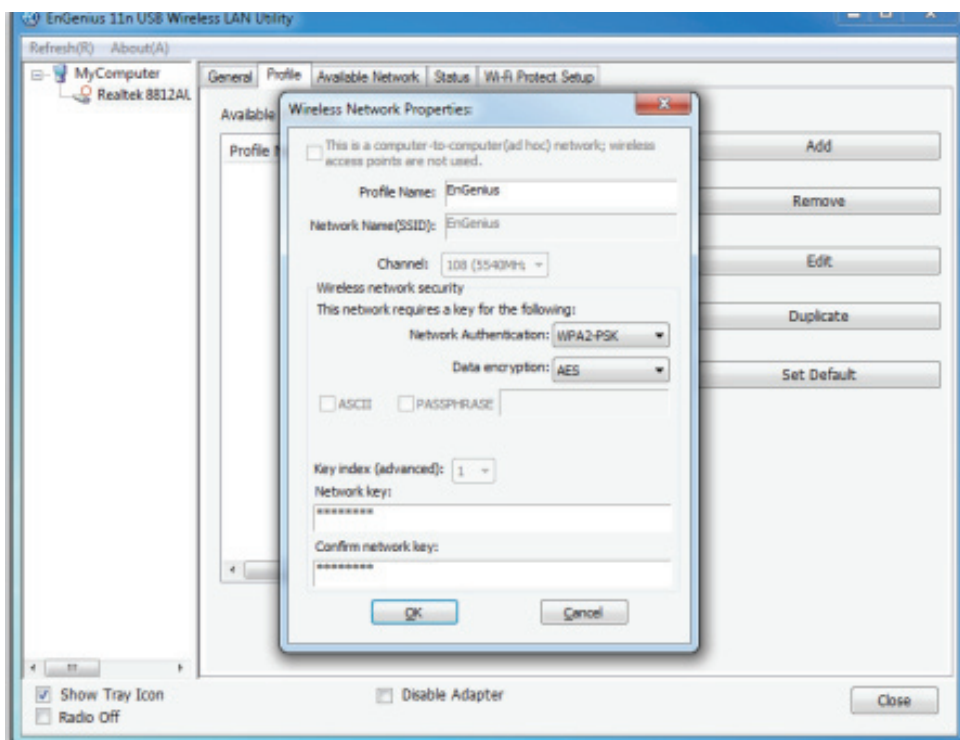
E. Open the wireless utility that is found in your operating system and select the available network page.



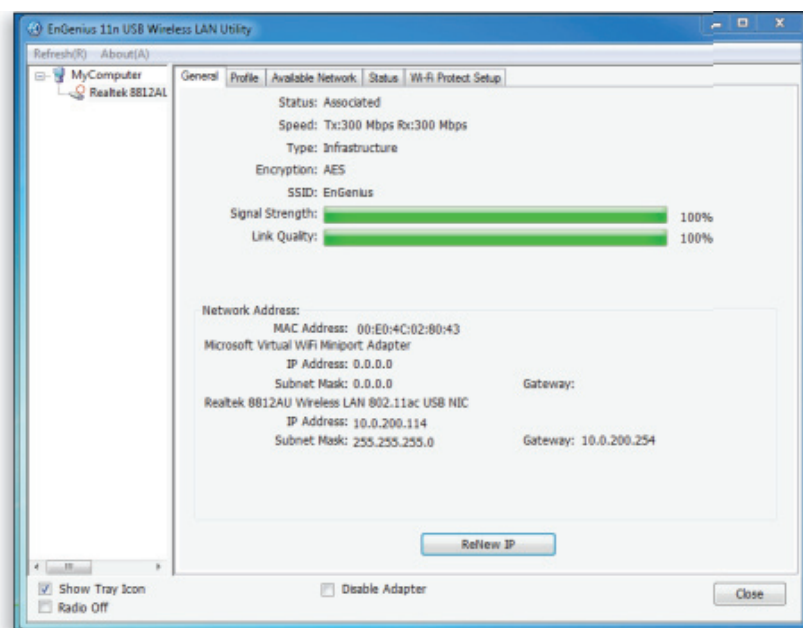
F. Select the name of the wireless network (SSID) that you would like to connect to.



G. Enter the password of your wireless network when prompted and connect to the network.



H. Confirm that the connection was successful by opening a web browser or checking the wireless signal indicator icon.



### 2. WPS Setup

- A. Press and hold down the WPS button on your router (check with the User Manual that came with your router for any further instructions if necessary.)
- B. Within 2 minutes, press and hold down the WPS button on the EUB1200AC for 2 seconds. The LED should start to blink.
- C. Wait for 2 minutes.
- D. Confirm that the connection was successful by opening a web browser or checking the wireless signal indicator icon.

